

O'ahu Natural Gas Research Study

PSE HEALTHY ENERGY | STANFORD UNIVERSITY



Bringing science
to energy policy



Stanford

PARTICIPATE IN OUR STUDY

PSE and Stanford researchers are seeking O'ahu residents with natural gas appliances to participate in our air quality study to help us better understand O'ahu's hydrogen-blended natural gas and its potential impacts on indoor air quality, public health, and climate.

Participation in this study is easy but requires availability for a home visit between **September and November 2025**.

Residents may choose one of three options for participating:

1. **Active Air Quality Monitoring**
One 2-4 Hour Home Visit | Earn \$200
2. **Passive Air Quality Monitoring**
Two 30-Minute Home Visits | Earn \$200
3. Participate in **BOTH** and earn \$500!

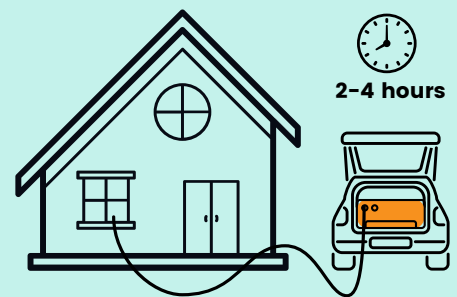
Scan the QR code for more information on our study, what participation involves, and eligibility.

**CLICK HERE
OR SCAN THE
QR CODE TO
JOIN OUR
STUDY !**



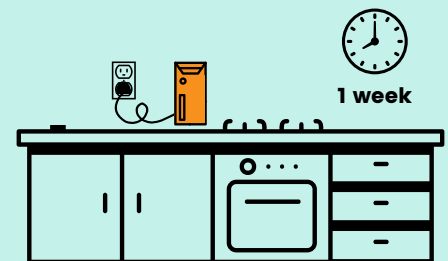
**PARTICIPATE AND
EARN UP TO \$500!**

Active Monitoring



Scientists will sample the air in your home for 2-4 hours using air quality analyzers stationed in a nearby car.

Passive Monitoring



Small air monitors will be placed throughout the home, in the kitchen, living room, and bedroom to measure air quality over 1 week.

Active Monitoring



Passive Monitoring



(Left) Air quality analyzers used for active air quality monitoring. **(Right)** Small air quality monitor used for passive air quality monitoring.

Learn more and sign up to participate at bit.ly/oahu-study